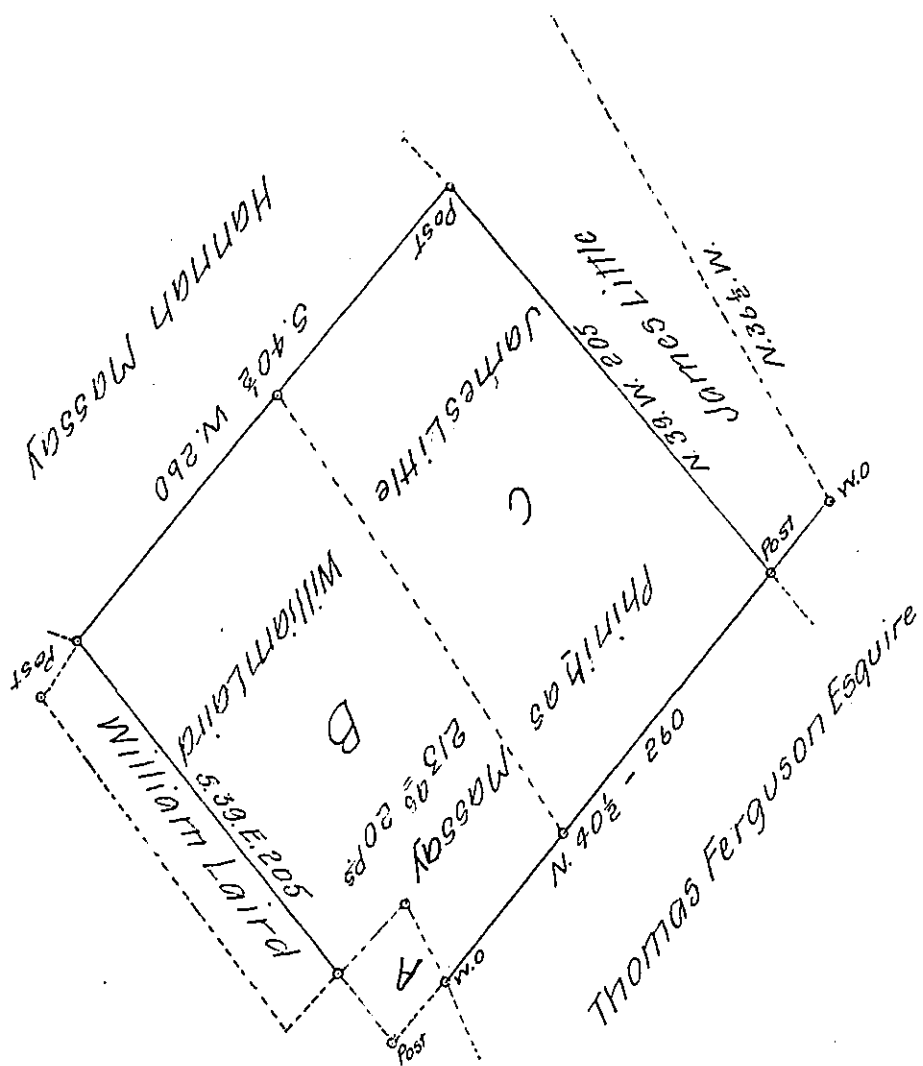


FORM No. 1.



Situate on or near the dividing Waters of Spruce Creek & slab Cabin Branch formerly in Huntingdon now in Center County containing Two Hundred & Thirteen Acres Twenty Perches & the Usual Allowance for Roads Surveyed (& the Interferences taken and laid down by order of the Board of Property) November 10<sup>th</sup> 1800. In pursuance of a Warrant dated the 2<sup>d</sup> day of August 1784. The above survey was originally made on the 26<sup>th</sup> day of August 1784.

Samuel Cochran Esquire S.G.

John Caman D.S.

Note the letter A Represents that Part of Phiritias Massays Survey that is taken by a prior Warrant & Survey to Ephraim Goves. the Letter B shews the part of P Massays Survey taken by a prior Order and Survey to William Laird. And that marked C is taken by a prior Order & Survey to James Little.

John Caman D.S.

IN TESTIMONY that the above is a copy of the original remaining on file in the Department of Internal Affairs of Pennsylvania, made conformably to an Act of Assembly approved the 16th day of February 1833, I have hereunto set my hand and caused the Seal of said Department to be affixed at Harrisburg, this Twenty-second day of August 1907

*Nevoy Howell*

Secretary of Internal Affairs.